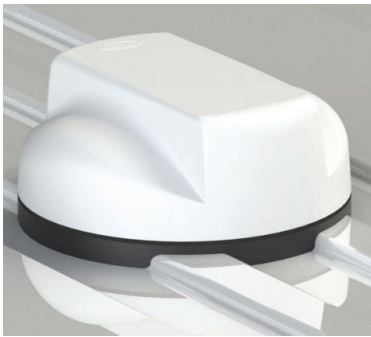


Foam Pad For Uneven Surfaces

For Low Profile Dome Antennas

For use with the dome antenna series, the mounting kit provides a flexible mounting solution for ridged or uneven roof tops and surfaces. Comprising of an extra long adaptor, nut, washer and EPDM foam pad, the kit is easy to assemble to any panel mount.

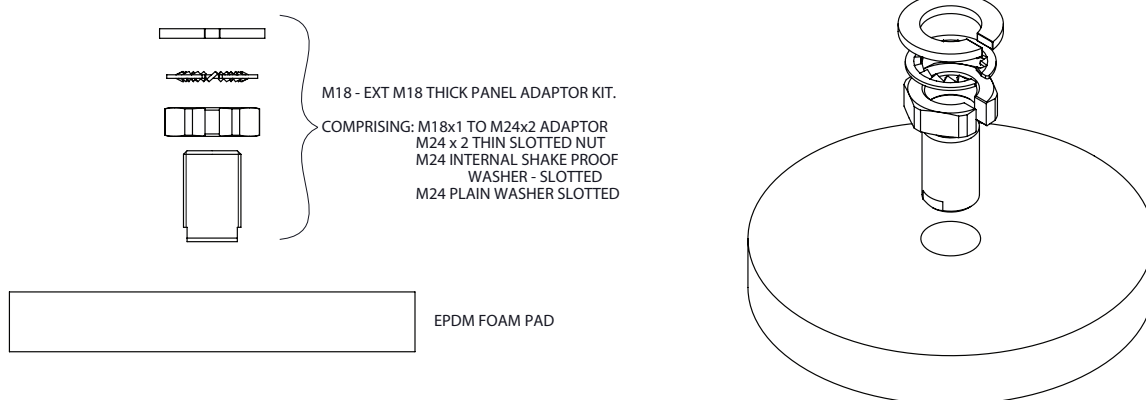
Once the antenna and pad are fitted and the correct level of compression is achieved, the pad will seal the mounting hole and mould to the contours of the mounting surface presenting a pleasant aesthetic finish.



Mechanical Data

Compression Required to Seal	0.78" (20mm) until hard stop
Max Panel Thickness / Ridge Height	0.4" (10mm)
Required Mounting Hole Size	1.0" (25mm)
Material	Semi-closed EPDM Foam
Color	Black

TECHNICAL DRAWING



FOR MORE INFORMATION, VISIT CRADLEPOINT.COM