

# Adaptor Cable

**Solution:** 1m / 3.3' Cable Cradlepoint Certified Cable for Fixed Sites ■ **Application:** For use with CP-2004-1-PAN

---

A high quality double shielded 5mm (0.2") cable offering both copper braid and aluminium foil shielding which significantly reduces signal attenuation especially at higher frequencies.

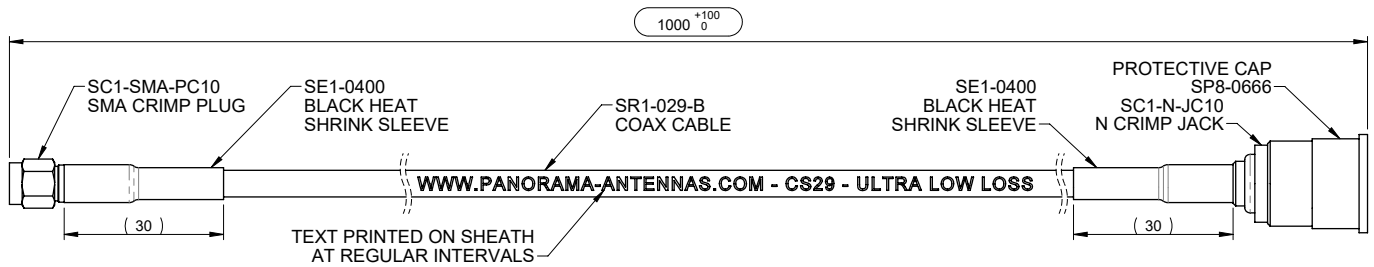
The stranded copper center conductor and cellular polyethene dielectric ensures that the cable offers excellent flexibility.



## Technical Data

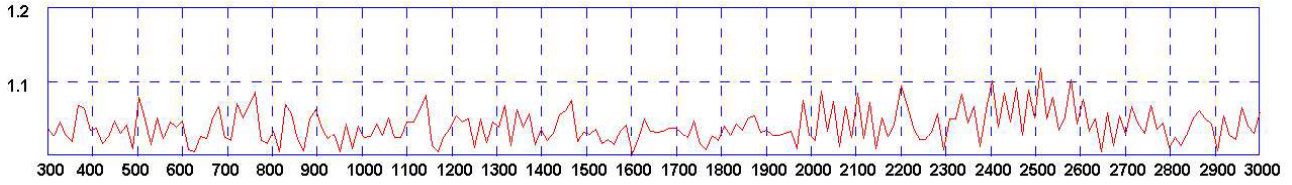
|                         |  |               |
|-------------------------|--|---------------|
| Length                  | 3.3' (1m)                                |               |
| Termination             | N Jack                                   | SMA Plug      |
| Impedance               | 1GHz                                     | 50Ω ± 2Ω      |
|                         | 2GHz                                     | 50Ω ± 4Ω      |
| Loss No Greater Than    | 400MHz                                   | 2.2dB per 10m |
|                         | 1GHz                                     | 4dB per 10m   |
|                         | 2GHz                                     | 5.5dB per 10m |
| Braid Resistance        | Less Than 160mΩ per 10m                  |               |
| Shielding Effectiveness | <-95dB According to IEC 61196-1 at 40MHz |               |
| Operating Temp          | -40° / 176°F (-40° / +80°C)              |               |
| Color                   | Black                                    |               |
|                         | Material                                 | Diameter      |
| Outer Jacket            | Flexible Thermoplastic                   | 5.10 (0.2")   |
| Outer Conductor         | Tin plated Copper Braid                  | 3.3 (0.12")   |
| Secondary Shielding     | Bonded Aluminium Foil                    | 2.82 (0.11")  |
| Dielectric              | Foam Polyethylene                        | 2.6 (0.10")   |
| Inner Conductor         | Solid Copper                             | 0.96 (0.03")  |

## Technical Drawing



# Electrical Data

## Typical VSWR



## Attenuation (dB 10m per m of Cable)



Learn more at [cradlepoint.com/fixed-antennas](https://www.cradlepoint.com/fixed-antennas)