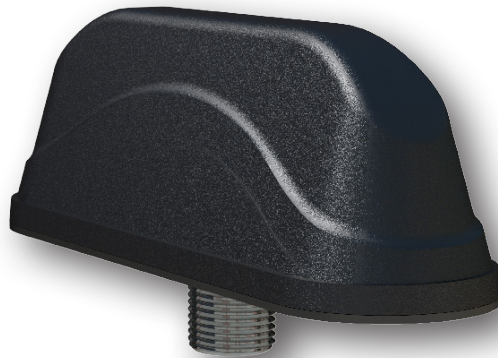


4 in 1 MiMo M2M & IoT

Solution: Cradlepoint Certified Fixed Site Antenna ■ **Application:** Kiosk / Digital Signage / Security Camera / Industrial

The 4 in 1 low profile panel mount antenna has been designed for use with the Cradlepoint IBR Series routers and provides multiple functions in one antenna for IoT and M2M applications. The compact, robust low-profile housing is weatherproof and contains 2x2 MiMo antenna function for 2G/3G/4G LTE with 2x2 MiMo antenna function for WiFi.

The antenna can be fitted on a non-conductive panel if required and offers easy, quick, secure and weatherproof installation with the single hole mounting bush and industrial grade adhesive sealing pad. The antenna kit is supplied with integrated 1m/3.3ft RG174 cables terminating in SMA plugs for LTE and reverse polarity SMA plugs for WiFi.



Electrical Data

Frequency Range	Elements 1 & 2 Elements 3 & 4	698-960 / 1710-2170 / 2500-3800 MHz	
Operational Bands	Elements 1 & 2 Elements 3 & 4	2G/3G/4G LTE WiFi	
Peak Gain: Isotropic	Elements 1 & 2	698-960 MHz 1710-3800 MHz	2dBi 5dBi
	Elements 3 & 4	2.4 GHz 5.8 GHz	4dBi 6dBi
Pattern	Omni-Directional		
Nominal Impedance	50Ω		
Max Input Power	25W		

* Peak gain simulated off a ground plane and does not include cable attenuation

Mechanical Data

Dimensions	Height	48mm (1.89")
	Length	150mm (5.90")
	Width	45mm (1.75")
Operating Temperature	-22° / 158°C (-30° / +70°F)	
Material	ASA	
Color	Black	
Ingress Protection	IP65	
Weight	200g	

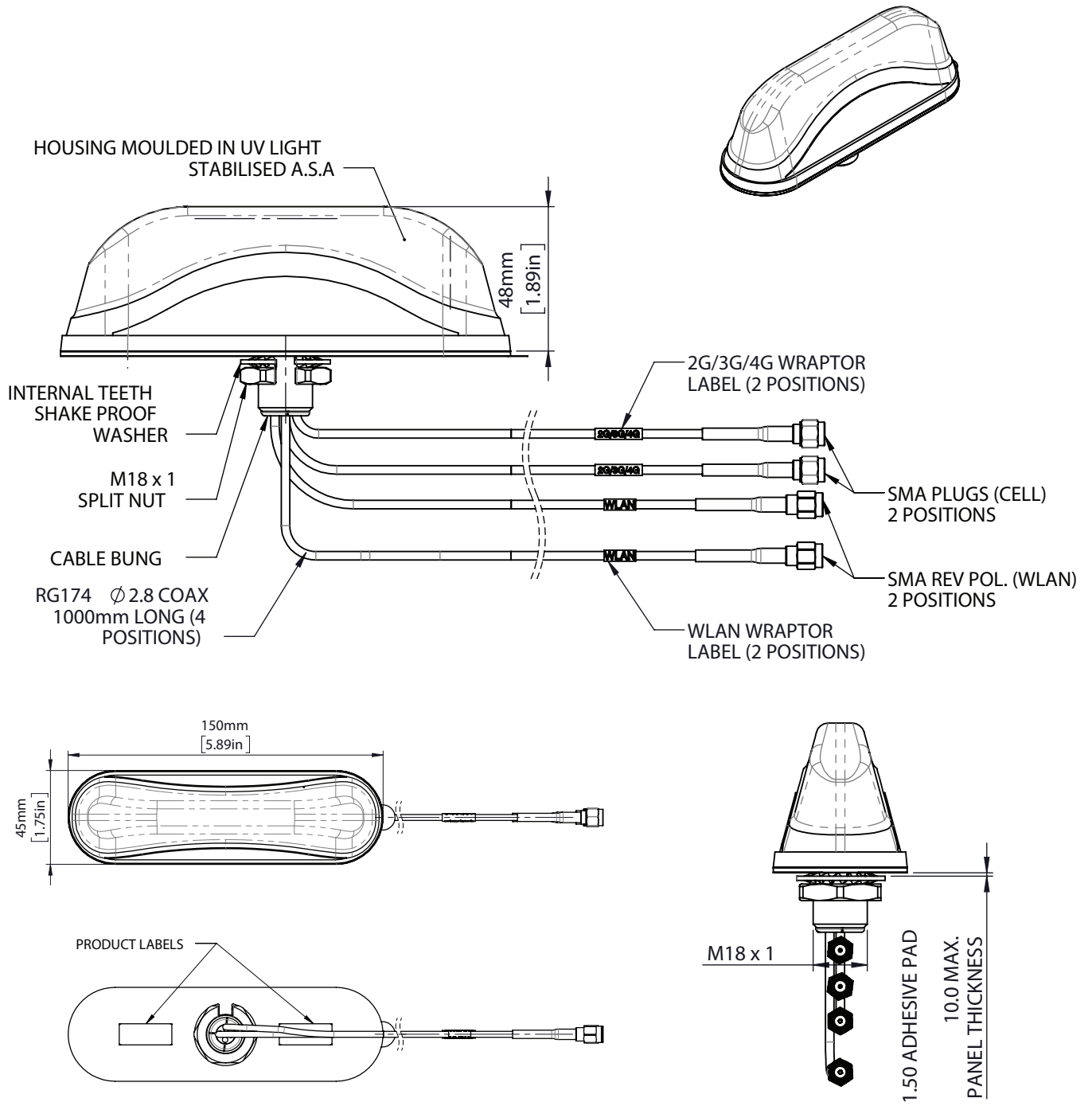
Cable Data

	Cell	WiFi
Type	RG174	RG174
Length	3.3ft (1m)	3.3ft (1m)
Termination	SMA Plug	SMA Reverse Polarity Plug

Mounting Data

Mounting Type	Panel Mount
Max Panel Thickness	0.27" (10mm)
Mounting Hole	3/4" (19mm)

Technical Drawing

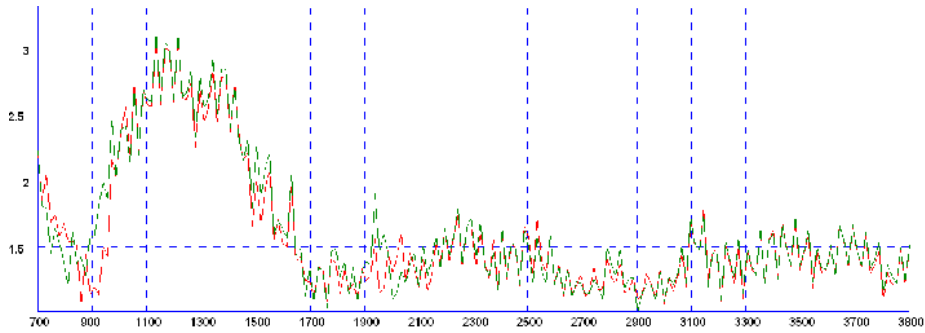


Electrical Data

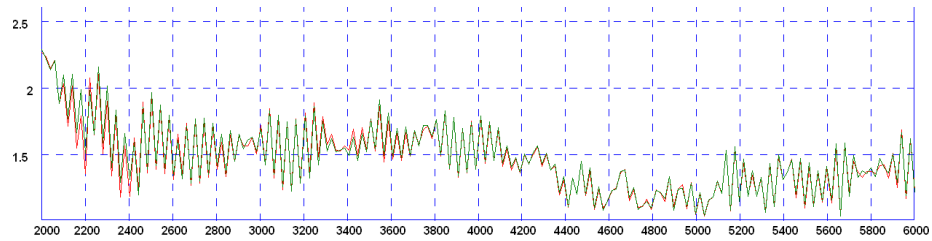
Typical VSWR

*VSWR measured with 3m (10') of RG174 cable a) Red: in free space b) Green: on a 400x 400mm (1'4') ground plane.

Typical VSWR - 2G/3G/4G LTE Elements 1 & 2*



Typical VSWR - WiFi Elements 3 & 4*



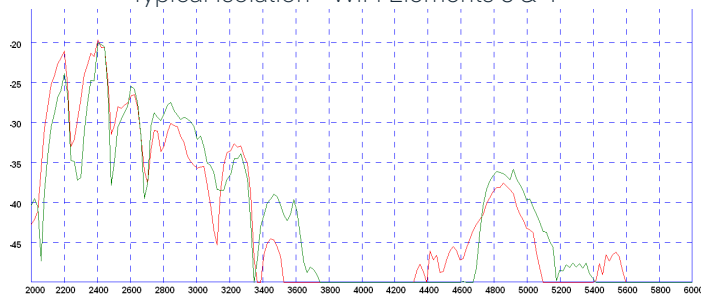
Isolation

*Isolation measured with 3m (10') of RG174 cable a) Red: in free space b) Green: on a 400x 400mm (1'4') ground plane.

Typical Isolation - Cellular Elements 1 & 2*



Typical Isolation - WiFi Elements 3 & 4*

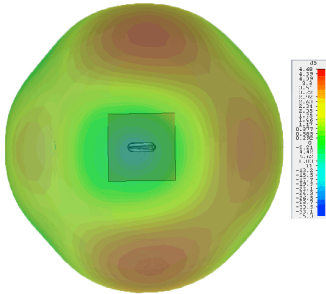


Radiation Patterns

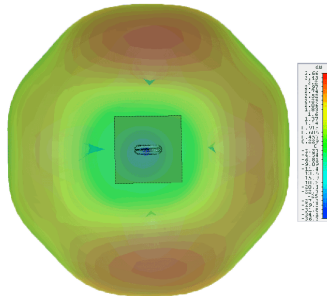
3D Radiation Patterns - 2G/3G/4G LTE Elements 1 & 2*

*All pattern and gain measurements taken on a 400 x 400mm (2'x 2') ground plane without additional cable.

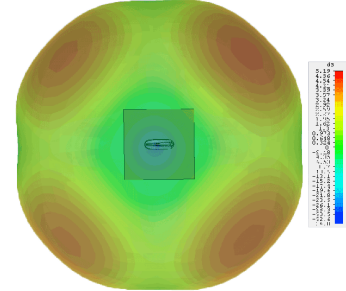
3D Gain Plot Top (700MHz)



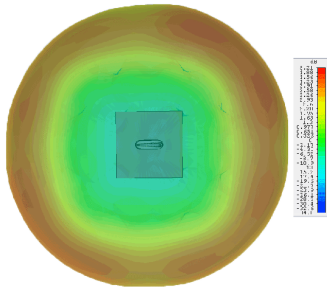
3D Gain Plot Top (800MHz)



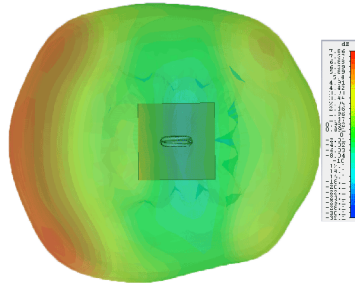
3D Gain Plot Top (900MHz)



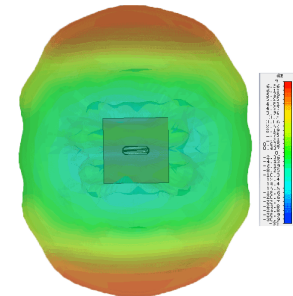
3D Gain Plot Top (1800MHz)



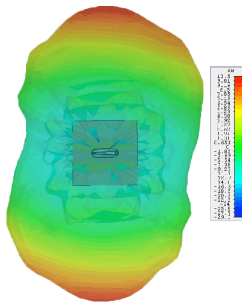
3D Gain Plot Top (2100MHz)



3D Gain Plot Top (2600MHz)



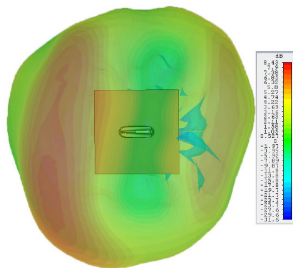
3D Gain Plot Top (3600MHz)



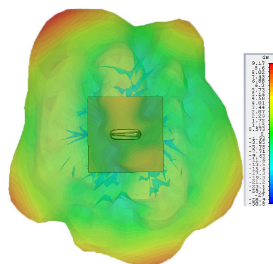
3D Radiation Patterns - WiFi Elements 4 & 5*

*All pattern and gain measurements taken on a 400 x 400mm (2'x 2') ground plane without additional cable.

3D Gain Plot Top (2.4GHz)



3D Gain Plot Top (5.4GHz)



Learn more at <https://cradlepoint.com/fixed-antennas>