

MiMo LTE Wall Mount With GPS/GNSS

Solution: Cradlepoint Certified Fixed Site Antenna ■ **Application:** Branch / Primary / Failover / Retail

The MiMo LTE Wall Mount Antenna with GPS/GNSS provides an innovative and future proof solution for 2G/3G/4G LTE networks. Incorporating two separately fed ultra wideband elements in a single housing the antenna is equipped to provide client side MiMo and diversity support for the networks of today and tomorrow.

With 2dBi gain at 698-960MHz, 5dBi gain at 1710-2170MHz and 4dBi gain at 2.2-2.7GHz the antenna provides extra gain performance where it is needed most as well as an integrated GPS/GNSS element with 26dB gain LNA for applications requiring positioning functionality.

The rugged, weatherproof housing is designed for wall mounting. Wall and mast mount brackets are provided. 5m/16ft of fitted low loss double shielded twin cable minimizes exposed connector joints and simplifies cable management for easy installation.



Electrical Data

Frequency Range	Elements 1 & 2	698-960 / 1710-2700 MHz
Operational Bands	2G/3G/4G LTE	
Radiation Pattern	Hybrid	
Nominal Polarization	Vertical	
Peak Gain (Excl. Cable Loss)	698-960 MHz	2dBi
	1710-2170 MHz	5dBi
	2200-2700 MHz	4dBi
VSWR (Excl. Cable)	< 3:1	
Efficiency (Excl. Cable Loss - All Bands)	> 50%	
Correlation Co-efficient (All Bands)	< 0.2	
Nominal Impedance	50 Ω	
Max Input Power	20W	

* Peak gain simulated off a ground plane and does not include cable attenuation

Mechanical Data

Dimensions	Height	155mm (6.1")
	Width	155mm (6.1")
	Depth	60mm (2.3")
Operating Temperature	-40° / 176°C (-30° / +80°F)	
Material	U.V. Stable, Impact Resistant ASA	
Color	White Luran	
Ingress Protection	IP65	
Weight	990g	

GPS/GNSS Data

Frequency Range	1562-1612 MHz
VSWR	<2:1 ± 4 MHz
Gain: LNA	26dB
Operating Voltage	3-5V DC (Fed via Coax)
Polarization	Right Hand Circular
Current	< 20mA

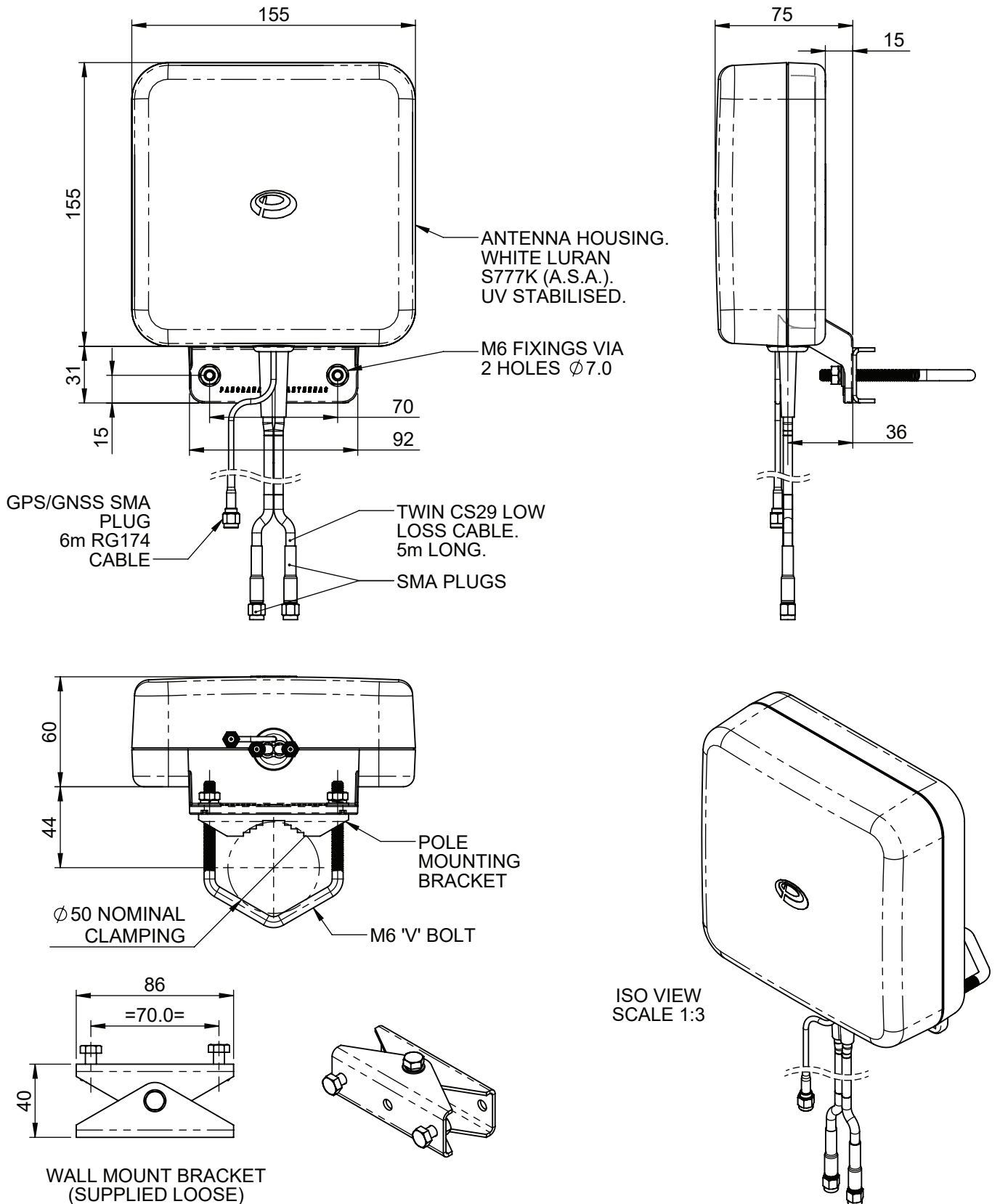
Cable Data

	Cell	GPS/GNSS
Type	Double Shielded RG58	RG174
Length	16ft (5m)	20ft (6m)
Termination	SMA Plug	SMA Plug

Mounting Data

Mounting Type	Wall Mount / Mast Mount / Desk Mount
Pole Diameter	0.78 - 1.96" (20-50mm)
Mounting Bracket Material	Stainless Steel / Aluminium

Technical Drawing

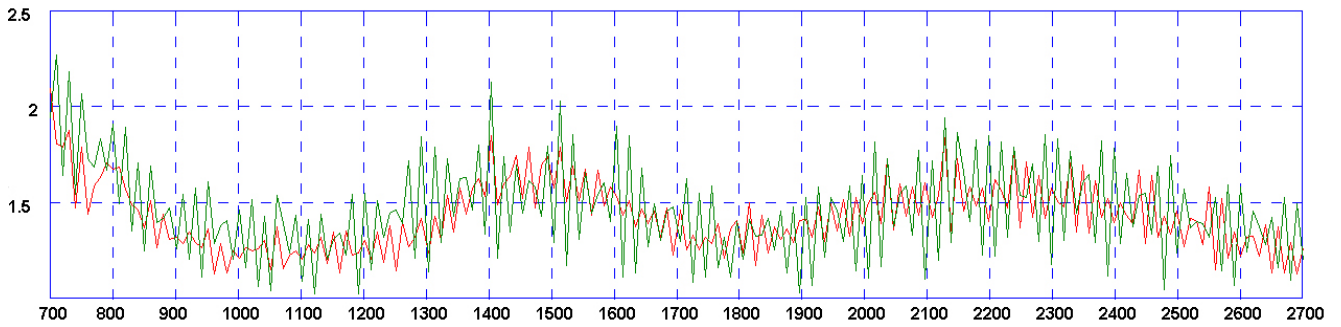


Electrical Data

Typical VSWR

*VSWR Measured with 5m (16') of CS29 cable.

Typical VSWR Elements 1 & 2*

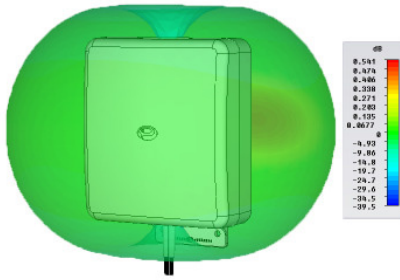


Radiation Patterns

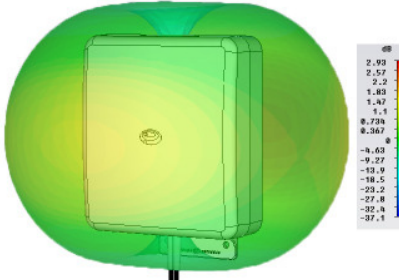
3D Radiation Patterns - 2G/3G/4G LTE Elements 1 & 2*

*All pattern and gain measurements taken on a 400 x 400mm (2' x 2') ground plane without additional cable.

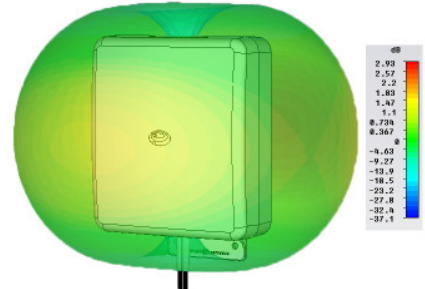
3D Gain Plot Side (750MHz)



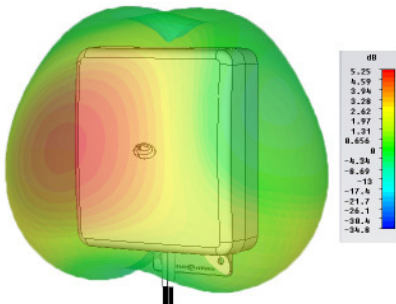
3D Gain Plot Side (850MHz)



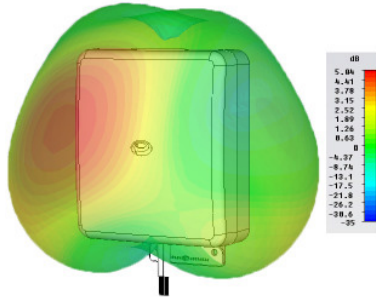
3D Gain Plot Side (950MHz)



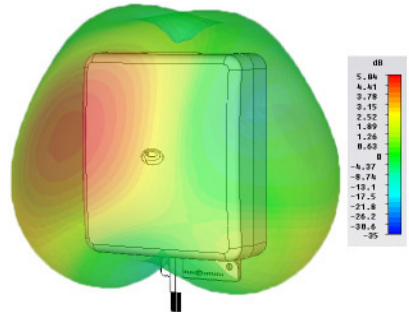
3D Gain Plot Side (1800MHz)



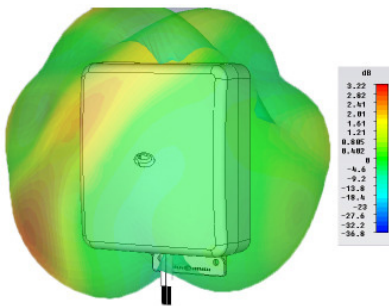
3D Gain Plot Side (1900MHz)



3D Gain Plot Side (2100MHz)

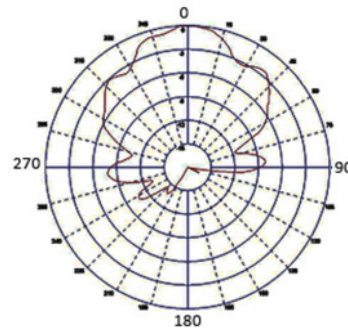


3D Gain Plot Side (2600MHz)



3D Radiation Patterns - GPS/GNSS Element 3*

GPS/GNSS Typical E-Plane (160MHz)



Learn more at <https://cradlepoint.com/fixed-antennas>